



160 Napier Street South Melbourne VIC

Steve & Leo Kikyris of Jason Real Estate Commercial are pleased to offer for lease to the public market: 160 Napier Street, South Melbourne.

This property, provides a great opportunity to run your business in the heart of South Melbourne next to the busy Clarendon street.

This facility encompasses a large and spacious floor plan across the ground, and, first floor levels with five separate enclosed office, kitchen and two separate toilet amenities.

KEY FEATURES INCLUDE:

- * Land area: 145 m2 (approx)
- * Building area: 185 m2 (approx)
- * 5 Separate enclosed office spaces
- * Secure off-street car parking space at rear

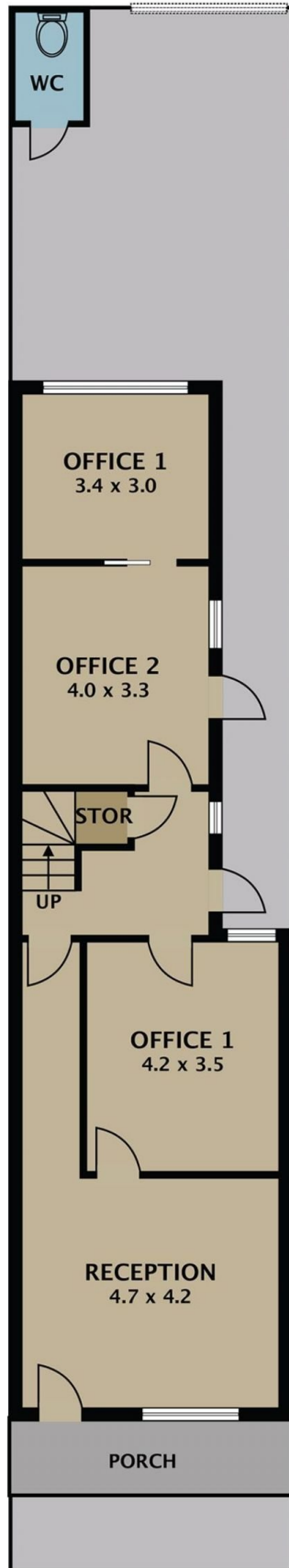
Building Size : 185 sqm
Land Size : 145 sqm
View : <https://www.jasonrealestate.com.au/lease/vic/inner-city/south-melbourne/commercial/offices/7336527>



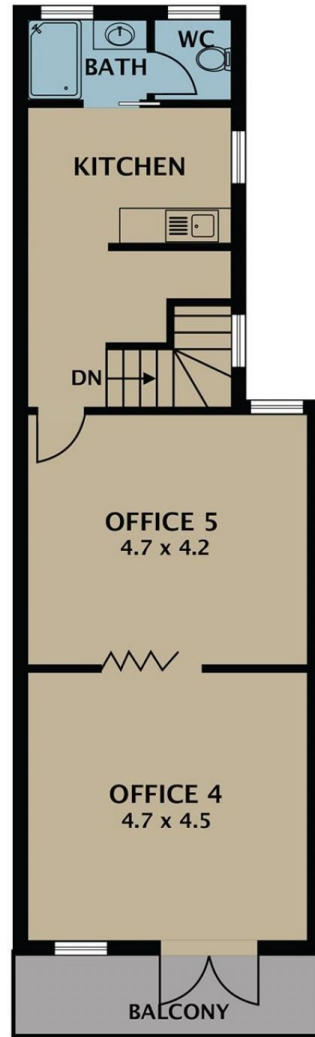
Leo Kikyris
03 9304 1444



Steve Kikyris
03 9304 1444



GROUND FLOOR



FIRST FLOOR

Disclaimer. Please note plans are indicative only and not drawn to exact scale. All dimensions are approximate. Potential buyers view the property in person.

160 Napier St South Melbourne