

## 4A Lawn Court Craigieburn VIC

4 🚗

Jason Commercial is pleased to offer for sale: 4a Lawn Court, Craigieburn.

This is your opportunity to secure a warehouse/office facility, with secure lease agreement in place.

This facility includes a ground level reception office area with the adjoining warehouse, and restroom facilities. The level 1 amenities provide a further open plan office area, kitchen and restroom amenities.

Located with easy access to nearby major arterial roads such as Sydney Road, Hume Hwy, and Craigieburn Roads.

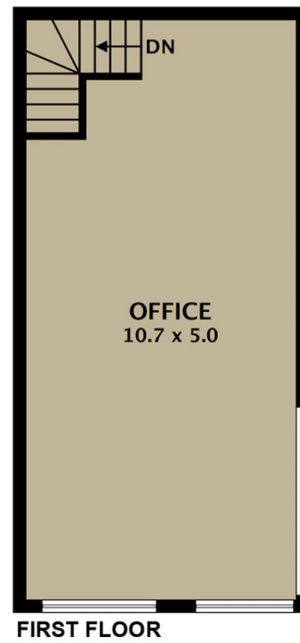
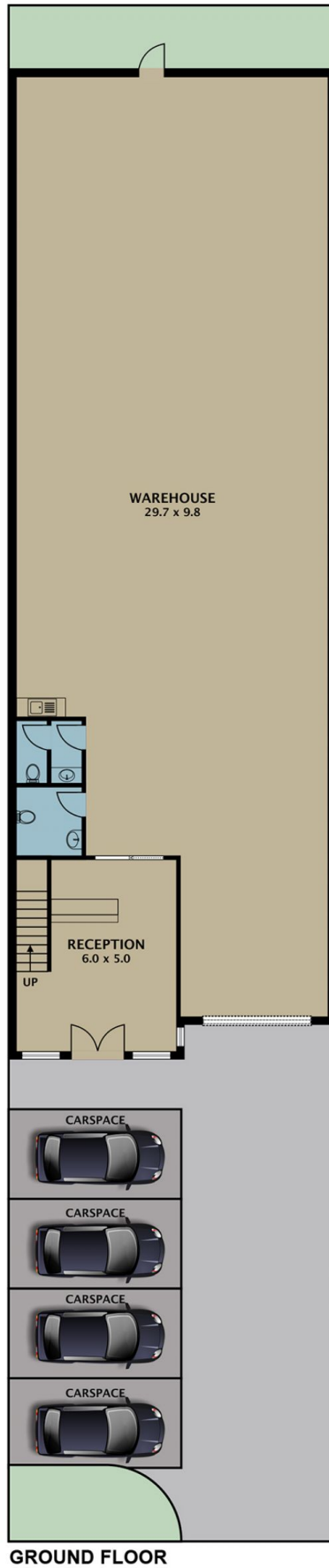
### KEY FEATURES INCLUDE:

\* Land Area: 410 m2 (Approx)

**Building Size** : 360 sqm  
**Land Size** : 407 sqm  
**View** : <https://www.jasonrealestate.com.au/sale/vic/north/craigieburn/commercial/industrial/7665456>



**Leo Kikyris**  
03 9304 1444



Disclaimer. Please note plans are indicative only and not drawn to exact scale. All dimensions are approximate. Potential buyers view the property in person.

# 4a Lawn Court Craigieburn