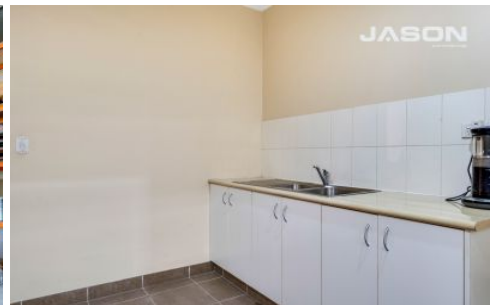


Leo Kikyris
0408 365 860

Commercial/Industrial
Division Manager



List your investment property with me today



1/3-5 Quest Court Craigieburn VIC

5 🚗

Jason Commercial is pleased to offer for sale to the public market: 1/3-5 Quest Court, Craigieburn.

High Clearance Warehouse/Office Facility with Easy Access to Hume Hwy

This is your opportunity to secure an outstanding facility that provides a clear-span warehouse area with plenty of room to move.

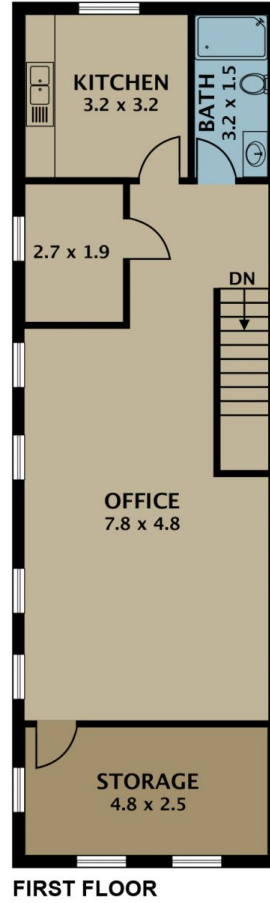
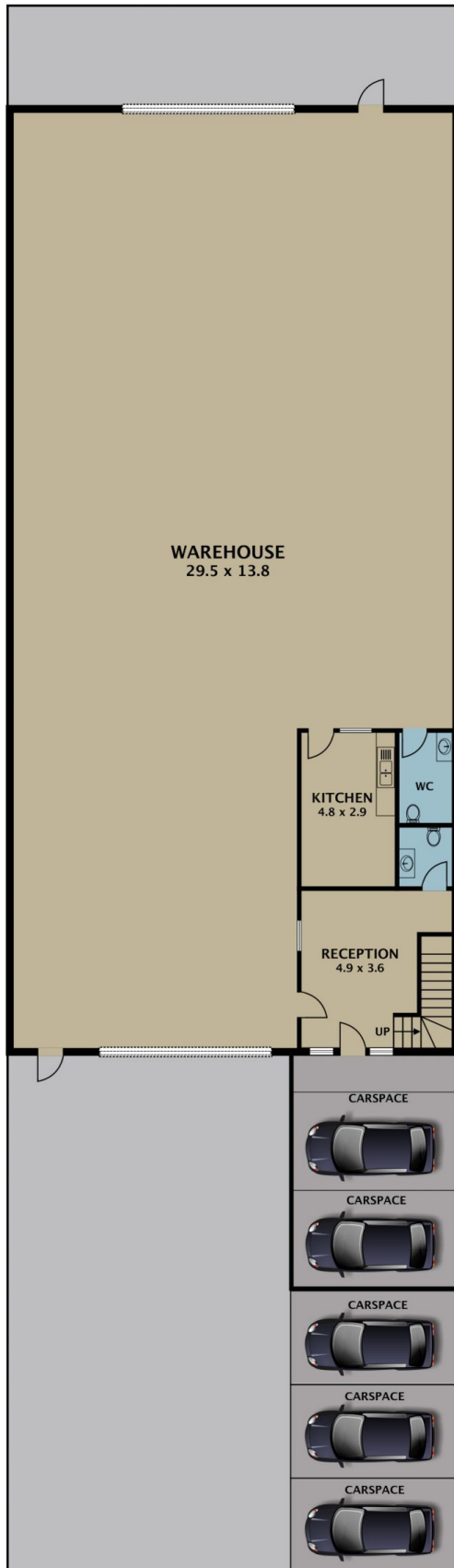
The property includes a ground-level reception office area with an adjoining warehouse, kitchen and restroom facilities. The level 1 amenities provide further offices, kitchen and restroom amenities.

This property is located with easy access to nearby major arterial roads such as Sydney Road, Hume Hwy, and

Building Size : 500 sqm
Land Size : 704 sqm
View : <https://www.jasonrealestate.com.au/sale/vic/north/craigieburn/commercial/industrial/7750001>



Leo Kikyris
03 9304 1444



Disclaimer. Please note plans are indicative only and not drawn to exact scale. All dimensions are approximate. Potential buyers view the property in person.

1/3-5 Quest Court Craigieburn