



15 Queensferry Place Greenvale VIC

5 🛏 4 🚗 4 🚗

Indulge in the epitome of luxury living with this majestic and elegant estate nestled within the exclusive and prestigious court of Greenvale, just off Elphinstone Blvd. Set upon a sprawling 1-acre allotment, this grand residence boasts over 80 squares of opulent living space, enveloped by meticulously landscaped gardens and secured behind a high clinker brick fence with dual double automated steel gates.

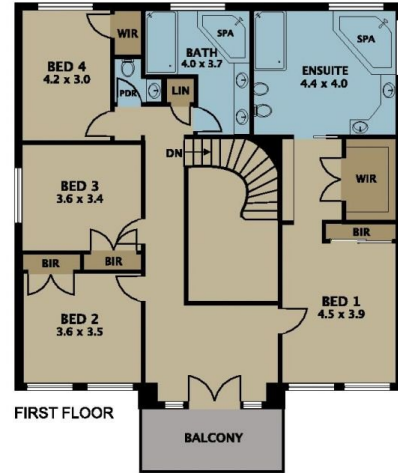
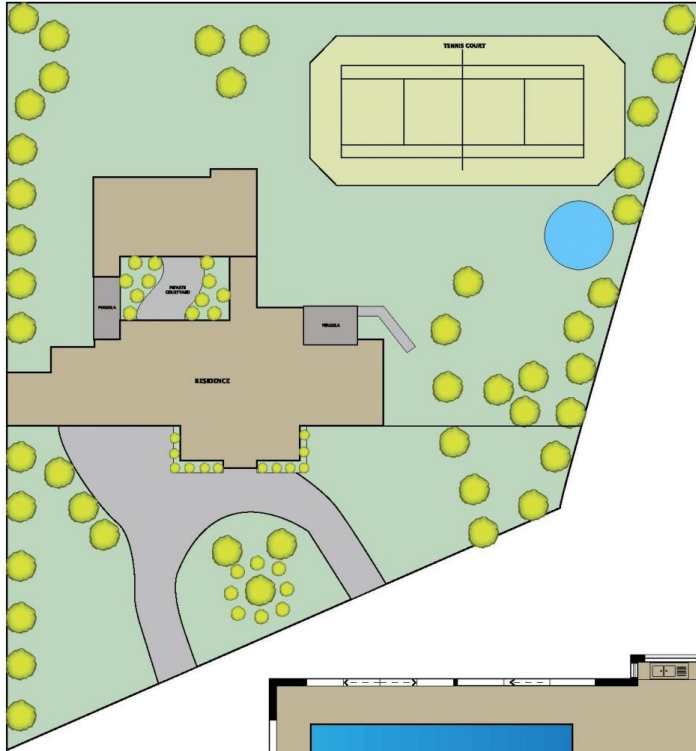
As you enter through the grand solid timber doors, you are greeted by a wide foyer adorned with a dazzling crystal chandelier and a sweeping curved staircase, setting the tone for the grandeur that awaits within. Multiple living zones offer versatility and comfort, with each room basking in magnificent natural light and tranquil garden vistas.

The formal lounge and dining room exude sophistication. A

Price : AUCTION
Land Size : 4007 sqm
View : <https://www.jasonrealestate.com.au/sale/vic/north/greenvale/residential/house/7985728>



Jason Sassine
03 9338 6411



Disclaimer. Please note plans are indicative only and not drawn to exact scale. All dimensions are approximate. Potential buyers view the property in person.

15 Queensferry Place Greenvale