



4/25 Beverage Drive Tullamarine VIC

5 

Leo Kikyris & Jason Sassine from Jason Commercial are pleased to offer for sale to the public market: 4/25 Beverage Drive, Tullamarine.

Trendy office fit-out with adjoining warehouse space within a corporate location, close distance from the Melbourne Tullamarine Airport (MEL). Property provides easy access to major arterial roads such as the Calder Freeway & Western Ring Road.

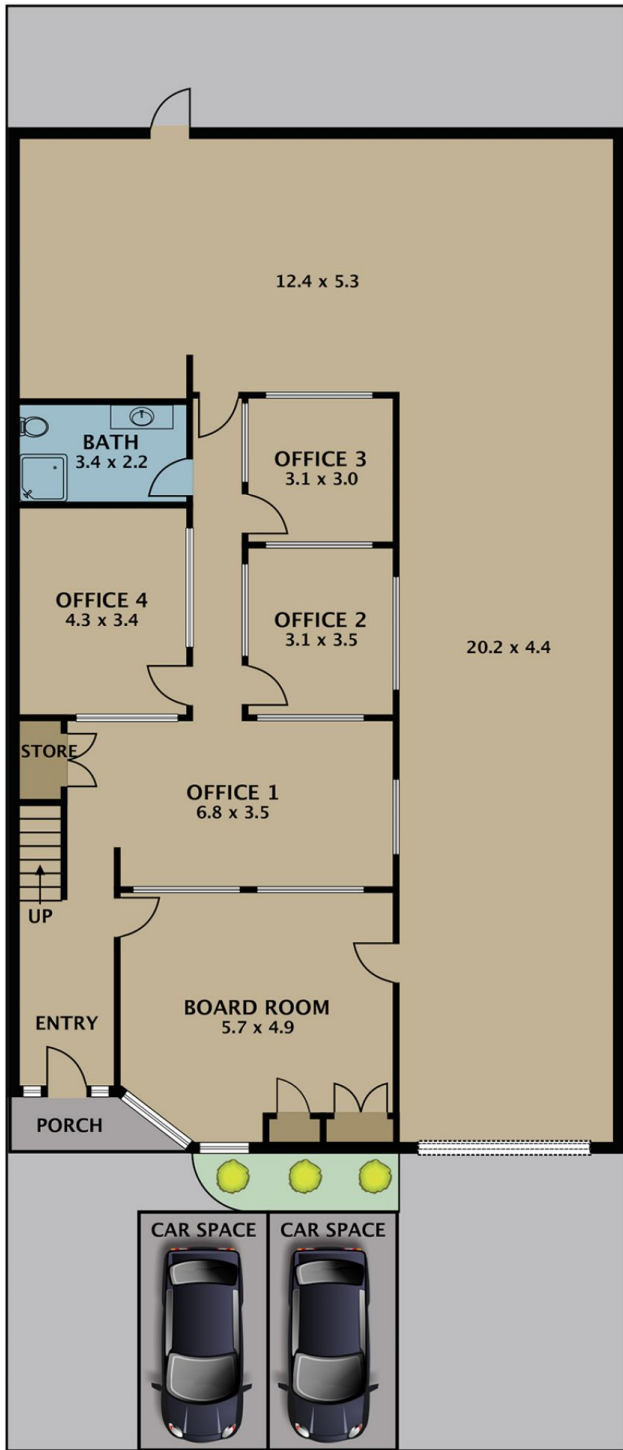
KEY FEATURES INCLUDE:

- * Total building area: 400sqm approx
- * 5 Car parking spaces on title
- * Industrial 1 zone
- * 3-Phase power
- * High electrical roller door access
- * NBN connection

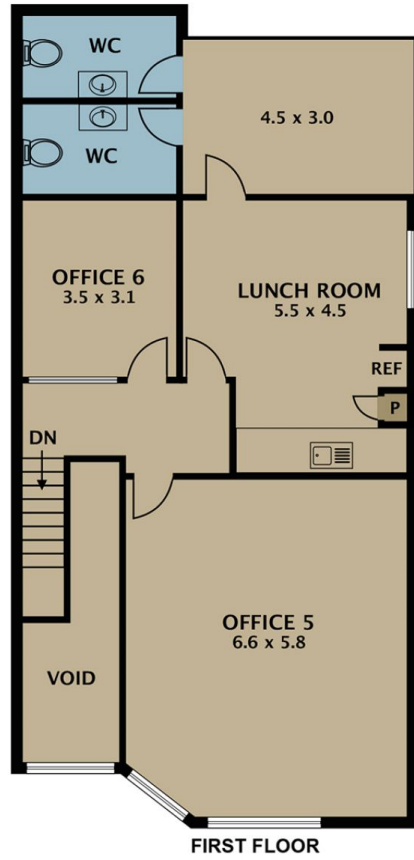
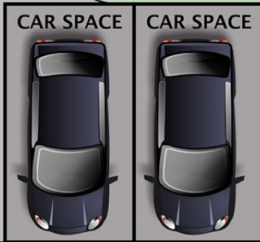
Price : Contact Agent
Building Size : 400 sqm
Land Size : 297 sqm
View : <https://www.jasonrealestate.com.au/sale/vic/north/tullamarine/commercial/industrial/8052379>



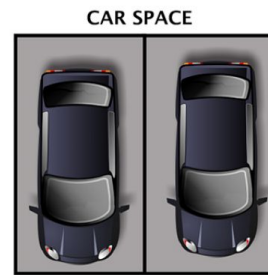
Leo Kikyris
03 9304 1444



GROUND FLOOR



FIRST FLOOR



(NOT IN POSITION)

Disclaimer. Please note plans are indicative only and not drawn to exact scale. All dimensions are approximate. Potential buyers view the property in person.

4/25 Beverage Drive Tullamarine