



Level 1/1/99-101 Western Avenue Westmeadows VIC



Jason Sassine of Jason Real Estate Commercial is pleased to offer for lease to the public market: Level 1 of 1/99-101 Western Ave, Westmeadows.

Be the lucky one to secure this phenomenal opportunity, in tightly held location offering an office space with good natural light with floor to ceiling glass windows, and, large balcony so that you can enjoy some time in the sun.

Located conveniently just off Mickleham Road, providing easy access to the Tullamarine Freeway, Western Ring Road and City Link Toll Road. Within close proximity to the Melbourne Airport (MEL).

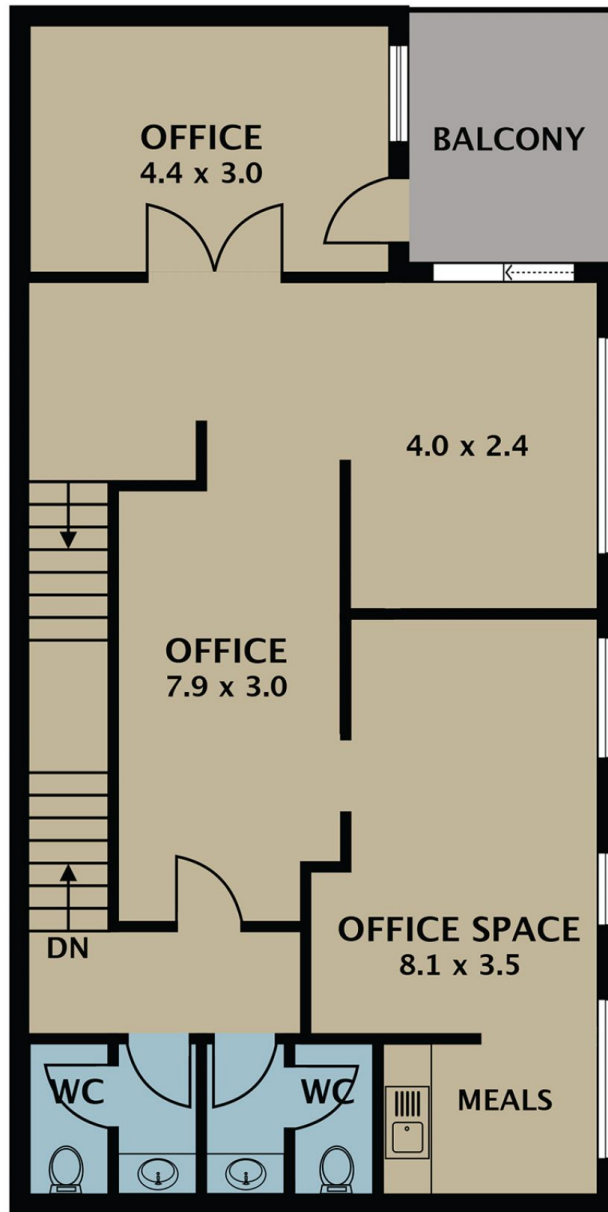
KEY FEATURES INCLUDES:

[For full version visit the website](#)

Type : Offices
Building Size : 63 sqm
Land Size : 63 sqm
View : <https://www.jasonrealestate.com.au/lease/vic/north/westmeadows/commercial/offices/8236757>



Jason Sassine
03 9304 1444



Disclaimer. Please note plans are indicative only and not drawn to exact scale. All dimensions are approximate. Potential buyers view the property in person.

1,1/99-101 Western Ave Westmeadows