



51 Firth Way Greenvale VIC

4 2 2

Positioned in a peaceful cul-de-sac pocket within the sought-after Shannon Rise Estate, this sophisticated modern contemporary residence delivers exceptional family living on approximately 855sqm, enjoying an uninterrupted outlook across the reserve opposite.

From the grand double wrought iron door entrance and wide welcoming hallway, the home immediately creates a sense of space, comfort and quality. Beautifully renovated throughout, it has been thoughtfully designed to accommodate a growing family with flexibility, warmth and style.

Expansive in design, the home offers three generous lounge areas, multiple dining zones, a dedicated study,

[For full version visit the website](https://www.jasonrealestate.com.au)

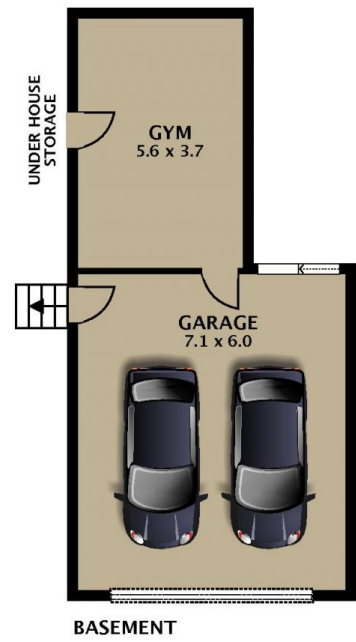
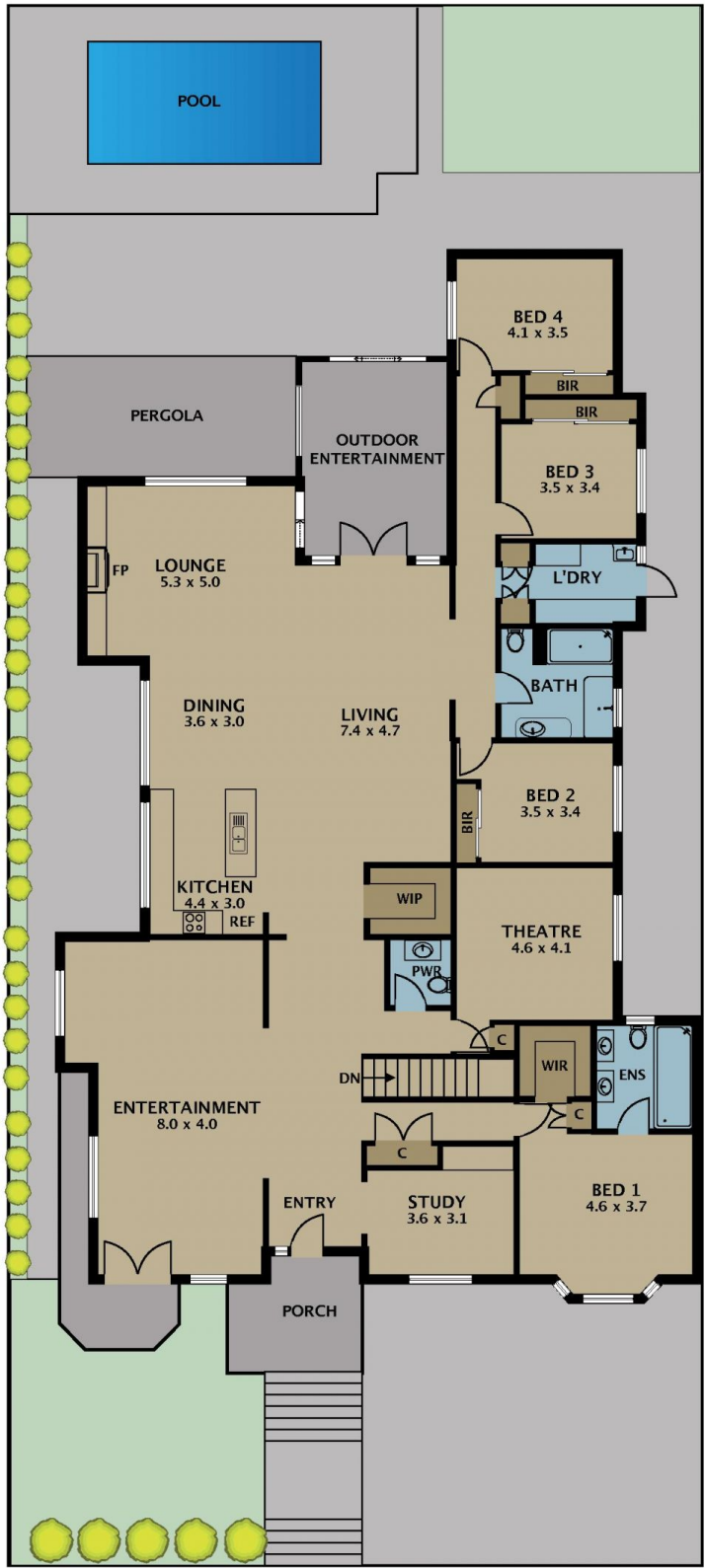
Type : House
Price : AUCTION | \$1.2M - \$1.275M
Land Size : 855 sqm
View : <https://www.jasonrealestate.com.au/sale/vic/north/greenvale/residential/house/8715632>



Jason Sassine
03 9338 6411



Romeo Sassine
03 9338 6411



Disclaimer. Please note plans are indicative only and not drawn to exact scale. All dimensions are approximate. Potential buyers view the property in person.

51 Firth Way Greenvale