



## 32 Destination Drive Greenvale VIC

4  2  2 

Set on a generous 510m<sup>2</sup> (approx.) allotment within Greenvale's sought-after Aspects Estate, this well-designed family home offers the perfect blend of space, comfort and functionality.

The spacious floorplan comprises four bedrooms, including a privately positioned master suite complete with a walk-in robe and ensuite featuring a bathtub and separate shower. The remaining bedrooms are all generously sized with walk-in robes and are serviced by a central family bathroom.

Designed for modern family living, the home boasts multiple living zones, including a welcoming lounge with a cosy fireplace, a dedicated theatre room and an expansive

**Type** : House  
**Price** : AUCTION | \$800,000 - \$850,000  
**Land Size** : 510 sqm  
**View** : <https://www.jasonrealestate.com.au/sale/vic/north/greenvale/residential/house/8715645>

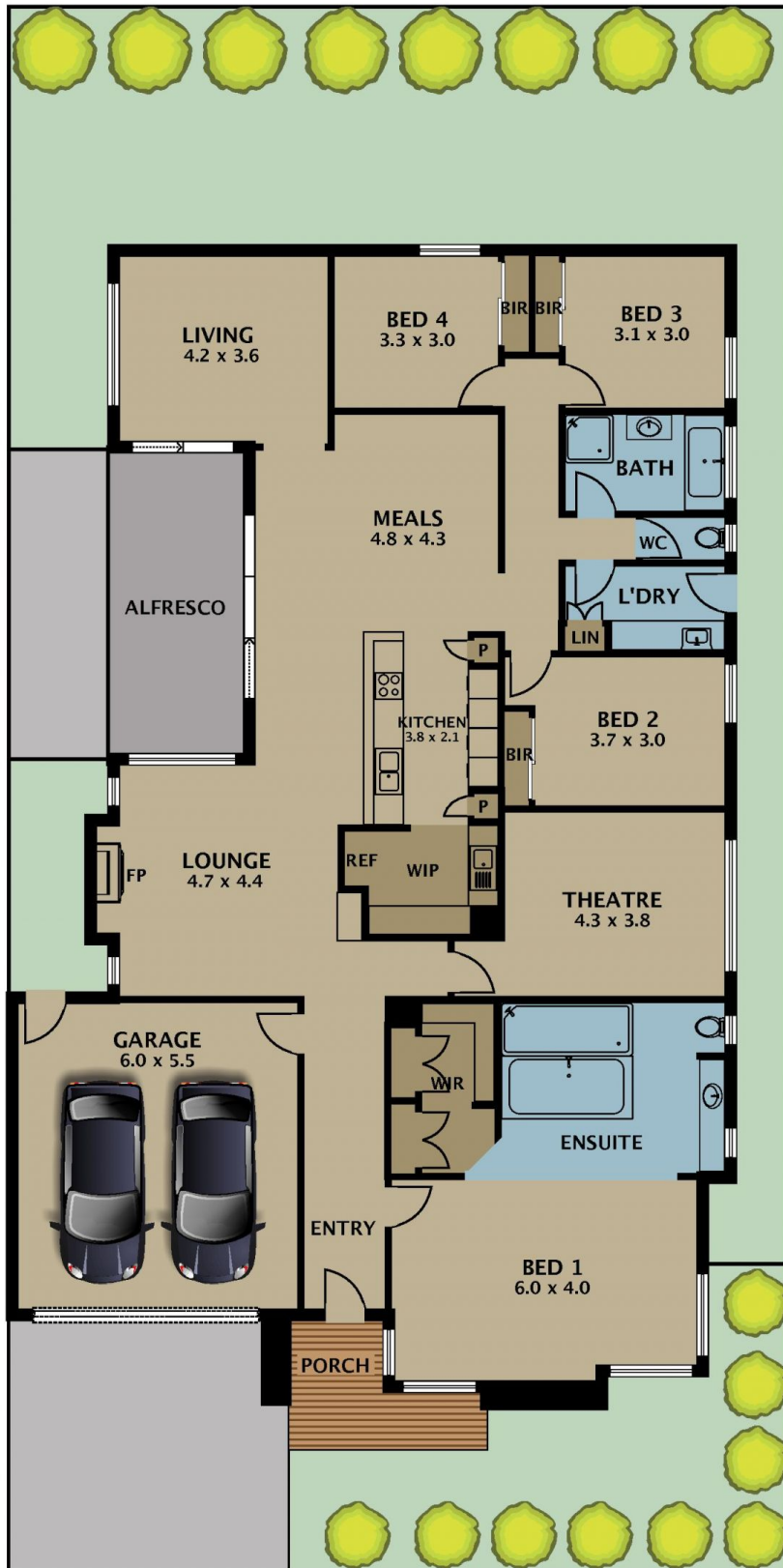


**Jason Sassine**  
03 9338 6411



**Romeo Sassine**  
03 9338 6411

[For full version visit the website](https://www.jasonrealestate.com.au)



Disclaimer. Please note plans are indicative only and not drawn to exact scale. All dimensions are approximate. Potential buyers view the property in person.

# 32 Destination Drive Greenvale